

The Red Shoes

LIGHTING SUMMARY



The light **changes regularly** throughout the performance from some **bright moments** to moments of **total darkness**.



Spotlights are used regularly throughout the performance. Sometimes these are **still** (whilst the rest of the stage is dark) and sometimes they **move** with the dancers on stage.



Bright floor lights are used regularly, sometimes these shine directly into the audience (often when the set on stage is moving).



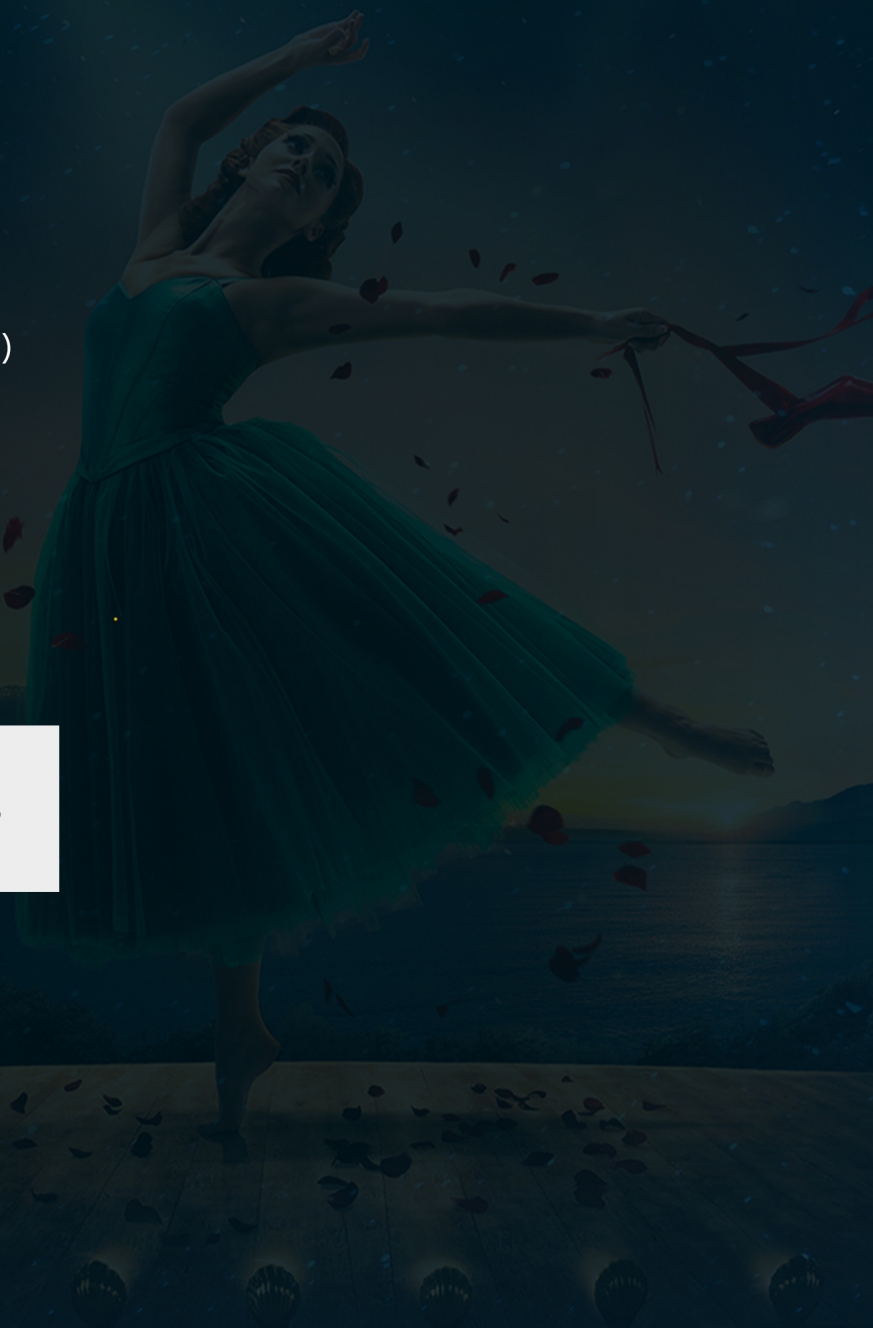
There is **no strobe or flashing lighting** during the performance.



Moving projections are used regularly in act 1 to show things like clouds, fire, wind and shooting stars.



The next two pages are a **Light Map** of The Red Shoes - showing bright and dark moments from the performance, and moments where the lighting changes suddenly.



The Red Shoes

LIGHT MAP - ACT 1

VERY
BRIGHT



BRIGHT

DARK

VERY
DARK



Blue light on stage, a row of **bright floor lights** shines towards the audience as the set onstage rotates.

The composer (Julian) dances solo on a dark stage, **bright spotlights** come in and out as well as **bright floor lights** which shine towards the audience.

Cool blue light during beach scene, ends in projection of **colourful fireworks**.

Striking cloudy **white set** with moving **black building silhouettes**.

Sudden change to **dramatic fiery red and orange** lighting and projection.

Bright **hazy white** with **swirling clock projection**.

Mins 5 10 15 20 25 30 35 40 45 50 55 60

Darkness between scenes then Irina Boronskaja dances with items of clothing in a **moving white spotlight**.

Darkness between scenes.

Conductor stands in **bright white spotlight** (rest of stage dark).

Fuzzy **white spotlight** on Vicky starts small and grows to fill whole stage.

Deep nighttime blue with moving star projection.

Start of act 1: a conductor walks into a **bright spotlight** then a pair of **red shoes** dance in a **spotlight** behind a curtain (rest of the stage dark).

The Red Shoes

LIGHT MAP - ACT 2

VERY
BRIGHT

BRIGHT

DARK

VERY
DARK

Start of act 2: **cool blue light** and **multicoloured paper lanterns** as characters dance in a café.

Cool blue light and **moving white spotlights** as Vicky and Julian dance.

Dark stage with **two dim white spotlights** as an Egyptian comedic double act perform.

Purple light onstage, **bright floor lights** and **moving spotlight** as Vicky dances unhappily in music hall.

Fade to black as Vicky runs from music hall, sobbing.

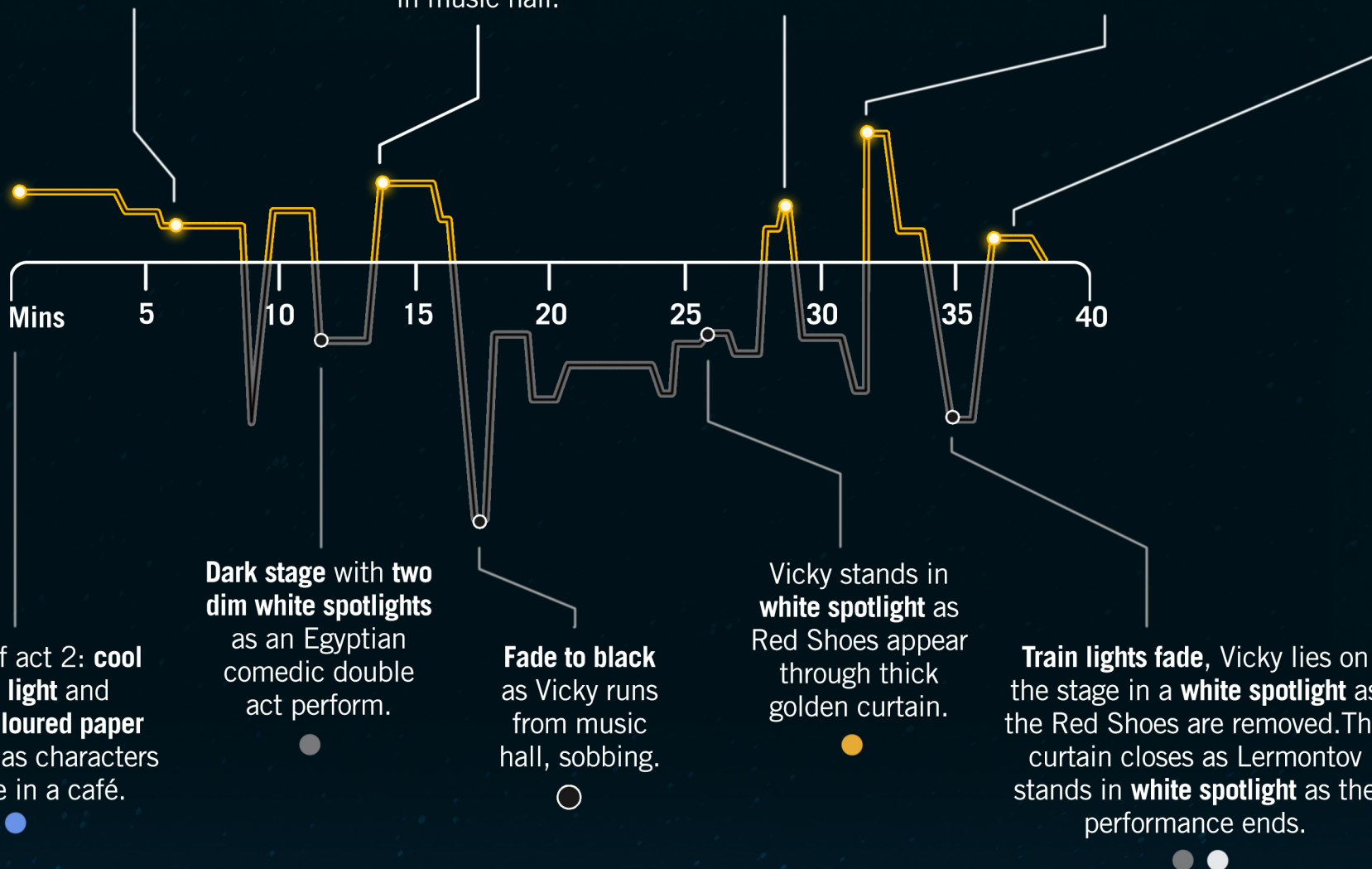
Curtains open to reveal dancers silhouetted by **bright white backdrop**, Vicky removes coat and **red and orange light** fades in.

Vicky stands in **white spotlight** as Red Shoes appear through thick golden curtain.

Vicky opens curtain and **very bright train headlights** shine directly into the audience.

Train lights fade, Vicky lies on the stage in a **white spotlight** as the Red Shoes are removed. The curtain closes as Lermontov stands in **white spotlight** as the performance ends.

Curtain call: **Warm light** on stage as dancers bow at the end of the performance.



The Red Shoes

About Light Maps

Since 2023, The National Theatre and disabled-led organisation Touretteshero have been working in partnership to develop research into lighting and accessibility in the theatre.

Over 120 disabled and neurodivergent people, as well as lighting professionals and staff from the National Theatre, have contributed to their research.

Participants have shared their lived experiences of light as a barrier and thought about accessible ways to share information about the lighting of a theatre performance.

The Light Map in this document is created by Touretteshero and is informed by their ongoing research.

Light Maps and the 'Light Maps' concept are the proprietary intellectual property of Touretteshero and should not be copied, adapted or reproduced without our permission. If you are interested in reproducing our Light Maps, or the concept, or would like to speak to us about developing a Light Map for your project, please contact us at will@touretteshero.com.

Light Maps
designed by
Touretteshero
CIC, 2025

